

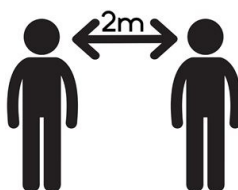
Wembrook Primary School  
 Avenue Road,  
 Nuneaton  
 CV11 4LU  
 Telephone: 024 76382961  
 Fax: 024 76356317  
 Email: admin2629@welearn365.com  
 www.wembrook.warwickshire.sch.uk  
 Headteacher Simon Pearson

Newsletter 12

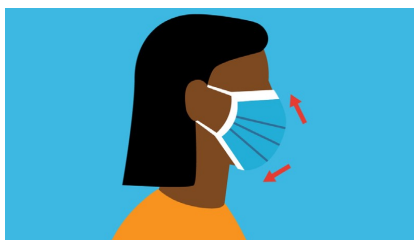
Wednesday 11th November 2020

**Believe and Achieve**

**While the country is in lockdown but schools are still open, are you doing your bit to support Wembrook staff ?  
 Are you social distancing on the playground ?**



**Are you wearing a mask and keeping it on when speaking to staff?**



**Dates for Your Diary**

Monday 16th November	Odd Sock Day
Friday 27th November	INSET Day School closed
Tuesday 8th December	Flu immunisation Day for Reception– Year 6
Friday 18th December	End of Term
Monday 4th January	INSET day School closed
Tuesday 5th January	Children start back to school

Please be aware that Friday 27th November is an INSET day. School will be closed on the day for all pupils.



## Anti-Bullying Week

Next week in school we are reflecting on bullying and why it happens, as part of the National Anti-Bullying Week.

As we always say at Wembrook, we are fortunate that for most of the time, with the vast majority of pupils, our behaviour is extremely good. However, we also know that on occasion pupils can let themselves down and situations can occur where other pupils can be wronged.

In school we will be looking at the difference between bad behaviour and bullying.

In brief, bad behaviour is a one off incident, while bullying is something when an individual is repeatedly picking on someone else over a sustained period of time.

It is important that we all use the right terminology, so that when bullying is used in the right context it is not diluted by inaccurate use.

Needless to say both bad behaviour nor bullying is ever tolerated at Wembrook!



## Odd Sock Monday

On Monday 16th all children are encouraged to wear odd socks as a symbol that it does not matter what you wear or look like, we are all the same and should all be treated the same.

It also emphasises that being different is good and makes everyone at Wembrook unique.

We hope everyone can join in.



## Oh No!

**What would happen if 14 naughty elves escaped and hid around Attleborough and Riversley Park..... and the children of Wembrook had to find them?**

**A special treasure hunt to raise money for our friends at Myton Hospice will be coming very shortly.**

**A guaranteed way to cope with lockdown weekends.**

**Maps and instructions to follow over the following weeks.**

**Look out for more information coming soon.**

